

**Multi  
Way**

**Lighting  
Controller**



Designed, Manufactured,  
offered to you since 1994  
Mt. Maunganui based

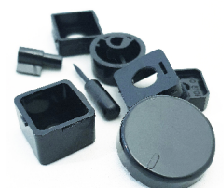
**KIWI MultiWay Lighting Controller recommended for press mech, push button dimming of...**

- \* Wire Wound Transformers
- \* 250volt Incandescent Lighting
- \* 250volt Down/Up Lights
- \* 250volt Halogen Lighting
- \* Heater Elements
- \* General Purpose Applications



**Solutions for You...**

- \* *MultiWay Dimming*      1, 2, 3, 4, 5... WAY Dimming! With **one** unit you can Soft Start or Stop, Turn Off or On, Dim up down from as many locations as you like.
- \* *Easy Installation*      No rewiring required; simply replace the existing Intermediate switches with a KIWI MultiWay and a momentary switch.
- \* *Fits ALL Plates*          Clicks straight into PDL, HPM and Clipsal flush plates with supplied adaptors.
- \* *FULL means FULL*        Brighter lights, greater heater output and increased efficiency achieved by active power factor sensing. 240volts in and up to 237volts out, 99% efficient.
- \* *Toughest loads*          Rated for ALL Inductive and Resistive circuits.
- \* *Extended Lamp Life*      Pre-Heat and Soft Start reduces the start current and eliminates thermal shock to the load.
- \* *Personalised Control*    All Controllers have **minimum** and **maximum** trimmers; you can set the output range for the user.
- \* *Thermal Safety PLUS*    Temperature compensation built in and backed by a Thermal Fuse for guaranteed safety.
- \* *New Zealand*              Owned, designed, manufactured and technically supported in Mount Maunganui.



**LW Series available in models...**

MODEL	K005LW	K007LW	K010LW	K020LW	K030LW
-------	--------	--------	--------	--------	--------

Va Rating	500	750	1000	2000	3000
-----------	-----	-----	------	------	------

This range is also available in standard configuration.

Black Conversion Kits available model KBC.

**Installation**

**Step 1 - adaptors**

**PDL:**

- **600series** fit the adaptor into the flush plate. Then fit the KIWI to the adaptor with locknut.
- **Iconic** fit the adaptor to the KIWI with locknut. Then fit the unit into the flush plate.
- For **600 and Iconic** fit the locknut cover "stop" side up.
- **Iconic only** fit the shaft extension to the shaft.

**HPM and Clipsal:**

- Fit the adaptor to the KIWI with locknut.
- Fit the locknut cover, "stop" side up.
- Click the unit into the flush plate.

**Step 2 - plate**

- Fit the face plate cover (if required).
- Slide the knob onto the shaft.

**Step 3 - electrical**

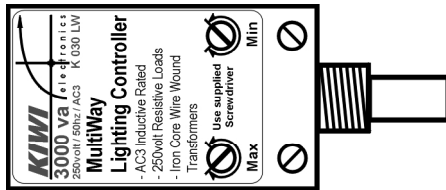
- Connect one red to live and one red to load.
- Connect the yellow wire to a press mech (if used) and connect the press mech to live.
- Press the Dimmer knob or short press the momentary switch (if used) to turn on or off.
- Hold the press mech (if used) to ramp up/down.
- Multiple press mechs can be used in parallel.

**When off:**

- Rotating the knob turns the unit on from low.
- Press & hold the press mech to turn on from low.

The knob will rotate 360° and with continuous mains supply will retain memory of where it was last set.

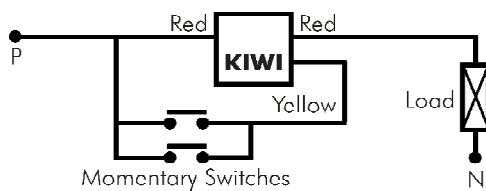
**Minimum and Maximum Settings**



**Minimum:** Turn the minimum trimmer clockwise to raise the minimum light level the knob can be turned down to. **Note:** The minimum level cannot be adjusted above the maximum. Set the light so it does not turn off completely when turning down, only when pressing the press mech or rotary knob off.

**Maximum:** Turn the maximum trimmer anti-clockwise to lower the maximum light level the knob can be turned to.

**Wiring Diagram**



**Warnings**

- ALWAYS ensure there is adequate ventilation (ie. air movement across the heatsink).
- Output from this unit will decrease if the thermal protection level is exceeded. In this event, increase ventilation.
- This unit is fitted with a thermal fuse. Exceeding a continuous current of 16amps or failing to supply adequate ventilation it will permanently open circuit.
- Do not exceed the specified Volt Amp (va) Rating.
- The KIWI MultiWay Lighting Controller has been designed to be connected in series with the load. Do not connect between phase and neutral.

Manufactured in NZ by: **KIWI Electronic Design Ltd**

Freephone: 0800 820 821

Email: [contact@kiwielelectronics.co.nz](mailto:contact@kiwielelectronics.co.nz)

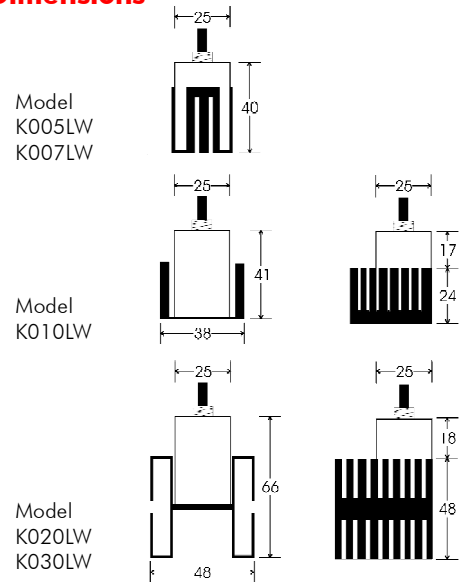
Web: [www.kiwielelectronics.co.nz](http://www.kiwielelectronics.co.nz)

**Product Specifications**

- Input voltage 250volt
  - Output voltage 0% to 98% of input
  - Frequency 50/60hz
  - Load rating AC3 Inductive  
AC1 Resistive
  - Switching type Leading Edge
  - Max per flush box 3 x K005LW or K007LW, 2 x K010LW  
1 x K020LW, 1 x K030LW
- (Ensure mounting method promotes air flow.)
- Ambient temp 25°C
  - Thermal Fuse 16amp/110°C max
  - Thermal Protection Activated above 70°C
  - Knob Rotation 360° no memory of last setting if isolated
  - EMC/RFI approval AS/NZS 4051
  - Designed to AS3100

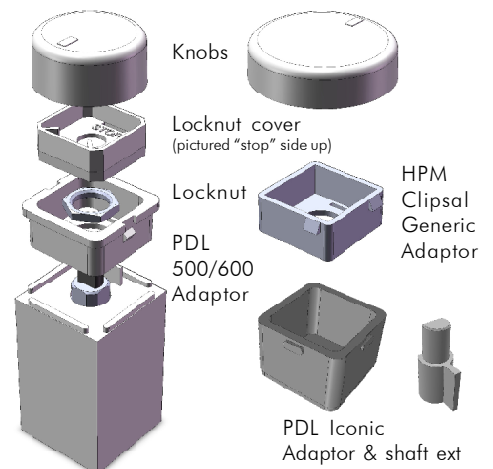
Note: Specifications may change without notice.

**Dimensions**

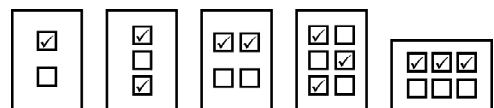


Note: Dimensions in millimetres (mm).

**Parts Assembly**



**Mounting**



Recommended mountings for multiple units.